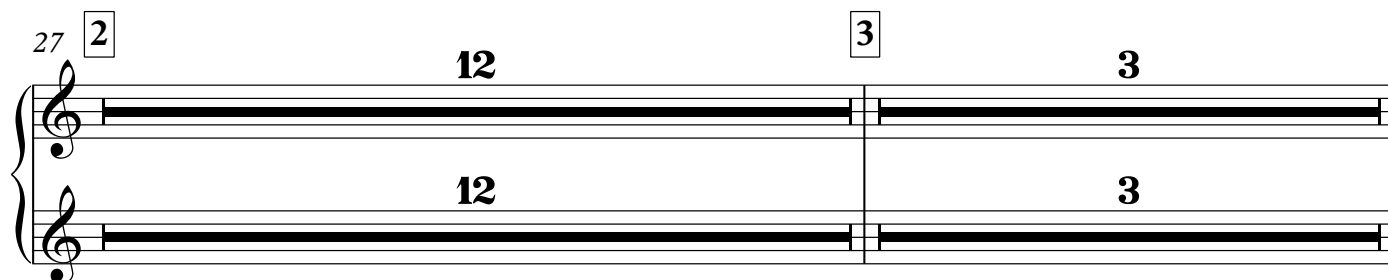
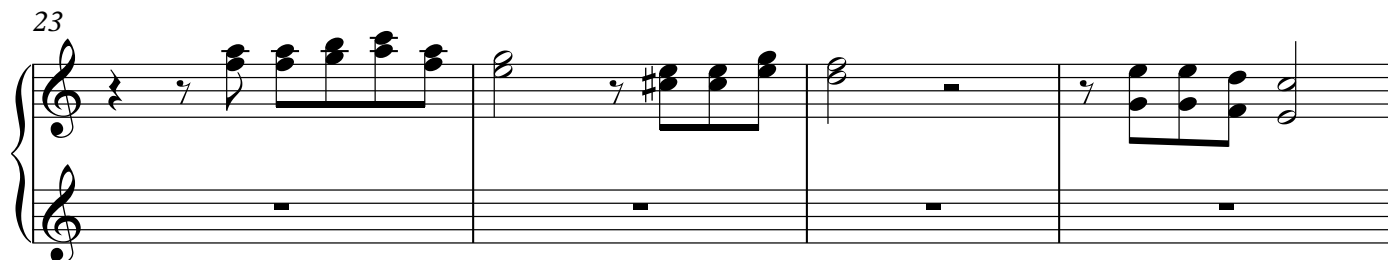
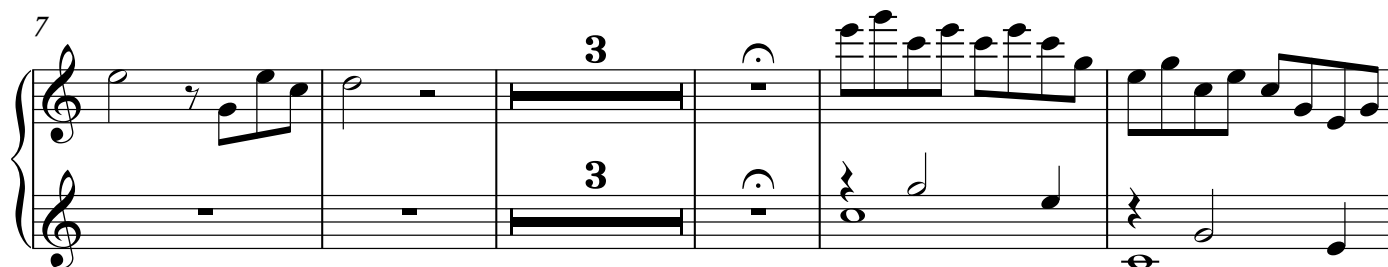
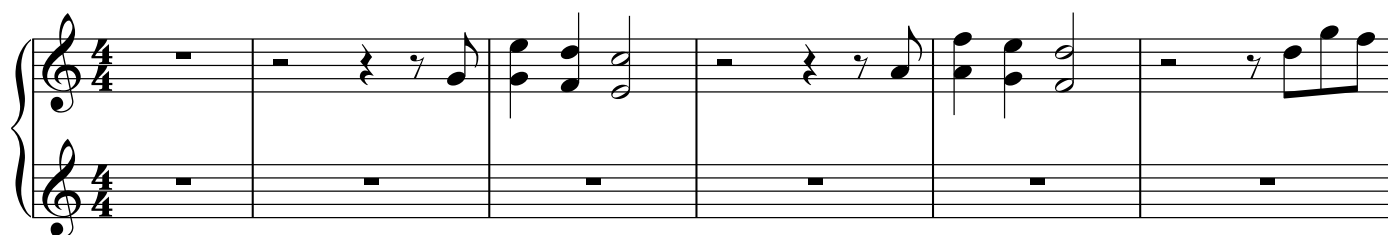


Поля зазеленели

Celesta



2

Celesta

42

4

Measures 42-44 of the Celesta part. Measure 42 features a continuous eighth-note pattern in the right hand and a descending eighth-note line in the left hand. Measure 43 continues this pattern. Measure 44 introduces a sharp sign on the eighth note of the right-hand pattern.

45

Measures 45-46 of the Celesta part. Measure 45 continues the eighth-note patterns. Measure 46 shows a continuation of the descending eighth-note line in the left hand and a more complex eighth-note pattern in the right hand.

47

Measures 47-48 of the Celesta part. Measure 47 features a triplet of eighth notes in the right hand and a triplet of eighth notes in the left hand. Measure 48 continues the triplet patterns.

49

Measures 49-53 of the Celesta part. Measures 49-50 show triplet patterns in both hands. Measure 51 has a whole rest in the right hand and a half note in the left hand. Measures 52-53 are marked with a '3' and a bracket, indicating a triplet of whole notes in both hands.

54

rit.

Measures 54-57 of the Celesta part, marked 'rit.' (ritardando). Measure 54 features a triplet of eighth notes in the right hand and a half note in the left hand. Measure 55 continues the triplet pattern in the right hand and has a half note in the left hand. Measures 56-57 are marked with a '3' and a bracket, indicating a triplet of whole notes in both hands.